

For Steven Darling

# inter mora

Ellen Ruth Harrison (2017)

$\text{♩} = 132$

Euphonium

*fp* *f* *fp* *f* *mp*

7

*f* *p* *mp* *f* *mf*

14

*p sub.* *f* *mp* *f*

20

3 *mf* *mp* *p* *mp legato*

26

*mf* *mp* *mf* *mp* *p*

32

*f*

38

*p legato*

45

$\frac{3}{4}$   $\frac{4}{4}$

52

3

59

*f*

63

♩ = 120

*p* *mp*

68

♩ = 112

*p* *legato*

73

*p* *legato*

77

*mf* *mp* *legato* *mf*

81

*mp* *legato* *mf*

85

*mp* *legato*

89

*mp* *legato*

93

*mp* *legato* *f*

97

*mp*

99

103

107

109

*f*

111

*p* *sub. f*

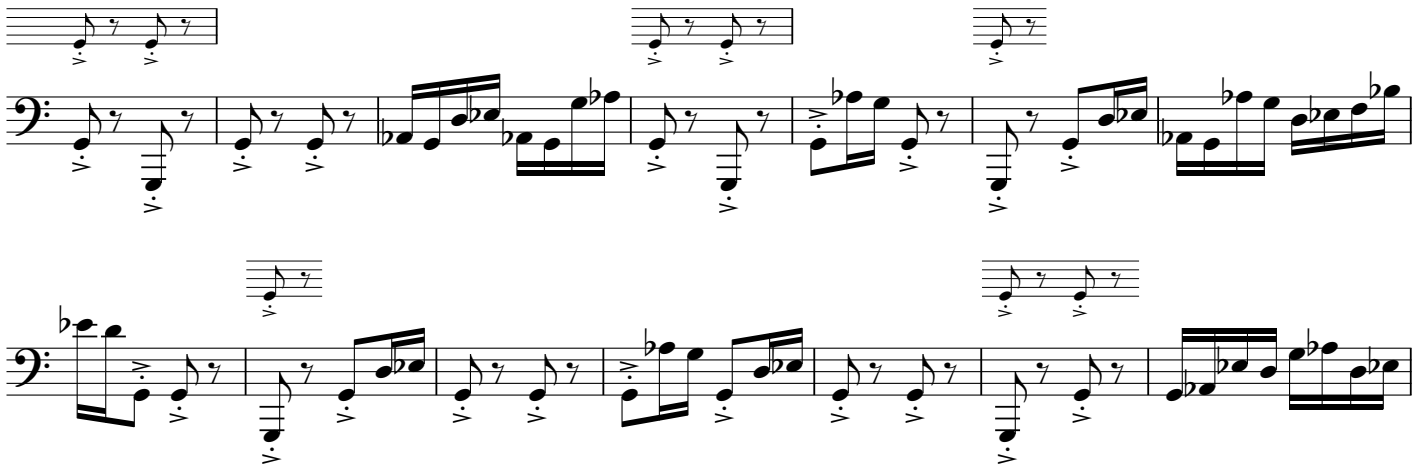
115 *sing* *poco rit.* . . . . .

*ff*

118 ♩ = 88



126



166

173

180

185

190

195

201

206

212

Musical staff 212, bass clef. The staff contains four measures of music. The first measure is a whole rest. The second measure has a dynamic marking of *fp* and contains eighth notes. The third measure has a dynamic marking of *sub. f* and contains eighth notes. The fourth measure has a dynamic marking of *fp* and contains eighth notes. The fifth measure has a dynamic marking of *sub. f* and contains eighth notes.

217

Musical staff 217, bass clef. The staff contains five measures of music. The first measure has a dynamic marking of *mp*. The second measure has a dynamic marking of *f*. The third measure has a dynamic marking of *p*. The fourth measure has a dynamic marking of *f*. The fifth measure has a dynamic marking of *f*.

222

Musical staff 222, bass clef. The staff contains six measures of music. The first measure has a dynamic marking of *sub. p*. The second measure has a dynamic marking of *sub. f*. The third measure has a dynamic marking of *sub. p*. The fourth measure has a dynamic marking of *mp*. The fifth measure has a dynamic marking of *f*. The sixth measure has a dynamic marking of *p* and *sub. f*.

227

Musical staff 227, bass clef. The staff contains five measures of music. The first measure has a dynamic marking of *sub. pp*. The second measure has a dynamic marking of *sub. f*. The third measure has a dynamic marking of *sub. f*. The fourth measure has a dynamic marking of *sub. f*. The fifth measure has a dynamic marking of *sub. f*.

232

Musical staff 232, bass clef. The staff contains five measures of music. The first measure has a dynamic marking of *sub. pp*. The second measure has a dynamic marking of *sub. f*. The third measure has a dynamic marking of *mp*. The fourth measure has a dynamic marking of *p*. The fifth measure has a dynamic marking of *p*. A tempo marking of  $\text{♩} = 120$  is present above the staff. The time signature changes from 3/4 to 3/4.

235

Musical staff 235, bass clef. The staff contains four measures of music. The first measure has a dynamic marking of *mf*. The second measure has a dynamic marking of *mf*. The third measure has a dynamic marking of *mf*. The fourth measure has a dynamic marking of *mf*. The time signature changes from 3/4 to 4/4.

238

Musical staff 238, bass clef. The staff contains three measures of music. The first measure has a dynamic marking of *f*. The second measure has a dynamic marking of *f*. The third measure has a dynamic marking of *f*. The time signature changes from 3/4 to 3/4.

241

Musical staff 241, bass clef. The staff contains four measures of music. The first measure has a dynamic marking of *p*. The second measure has a dynamic marking of *p*. The third measure has a dynamic marking of *p*. The fourth measure has a dynamic marking of *p*. The time signature changes from 3/4 to 2/4 and then back to 3/4.

246  $\text{♩} = 112$

*mp*

250

*p* *mf*

254

*p* *mp* *p* *mp* *p*

258

*mp* *p* *mp* *p* *mp* *p*

264

**Poco meno mosso**

*mf* *p*